

BULL OF TARENDAISE BREED



MATRA

N° FR 73 96 011 761
SIRE AZOV
MGS SALUT

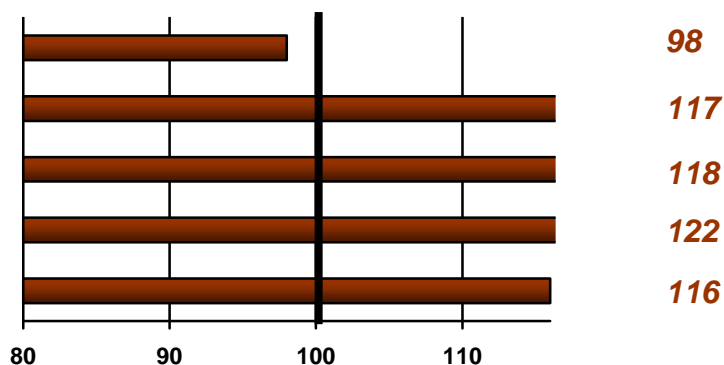
INDEX

February 2008

ISU
126

| MILK (kg) | FAT CONTENT (g/kg) | PROTEIN CONTENT (g/kg) | CELL COUNT | LONGEVITY |
|-----------|--------------------|------------------------|------------|-----------|
| +501 | -0,6 | -0,5 | + 0,7 | + 1,0 |

CALVING EASE (centered on 89)
BEEF VALUE
FEET & LEGS
UDDER
OVERALL TYPE



BULL WELL ADAPTED TO OBTAIN:

- Good quality udders
- Good feet and legs
- Very easy calving
- Very good milk



Union des Coopératives d'Élevage
Alpes-Rhône
14, chemin des Aubépines
69340 FRANCHEVILLE – France
Tel. 04 72 38 31 72 – Fax 04 74 38 31 70
E-mail : union@ucear.com